

Maps

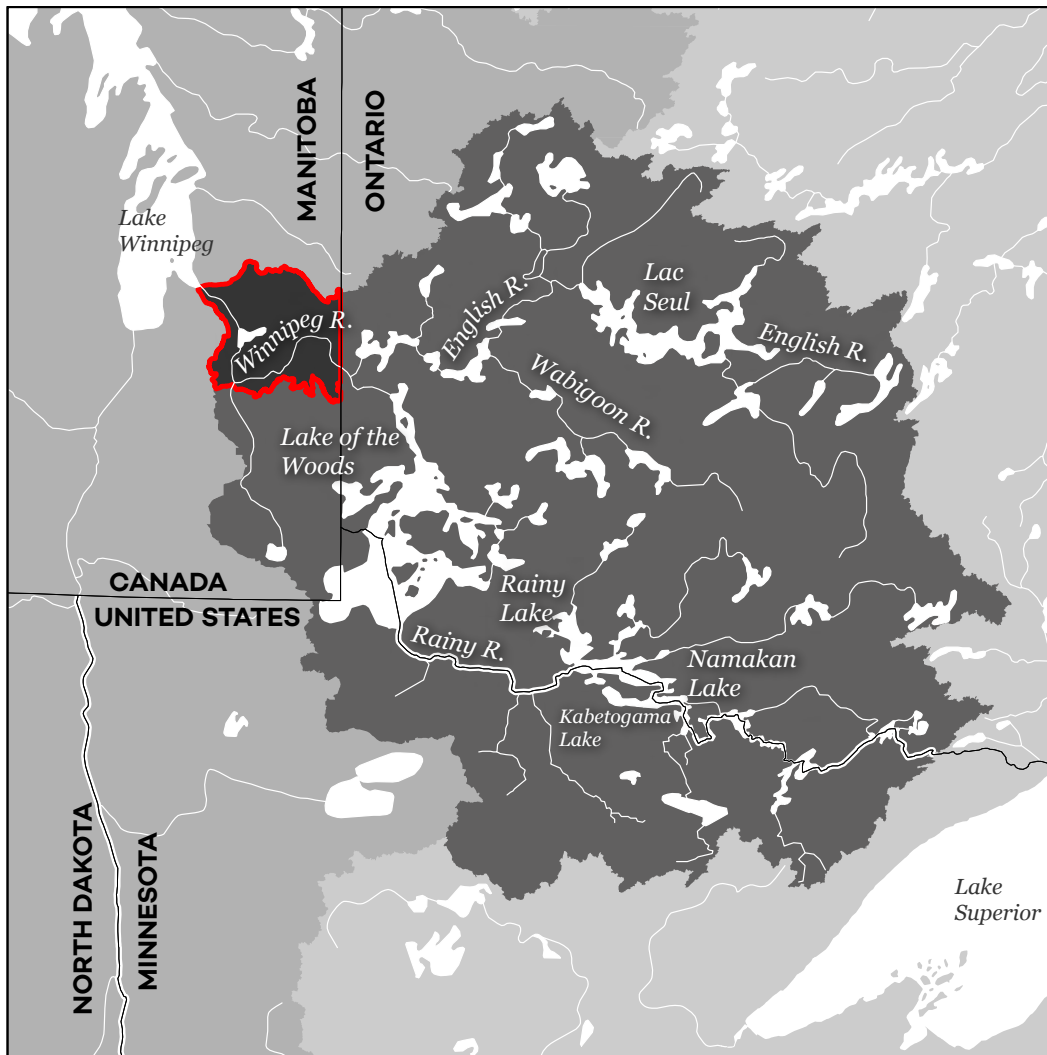
May 2021

Introduction

The lower Winnipeg River basin (LWRB) is located in the northwest section of the entire Winnipeg River basin (WRB), which spans parts of western Ontario and small parts of Manitoba and northern Minnesota, United States. The Discussion Sheet Series highlights research on ecological and socio-economic aspects of the basin to encourage discussion with experts, government departments, Indigenous groups, and stakeholders. The Discussion Sheet Series is based on available data collected in 2018 and 2019. Sheet 11 of 11 provides a series of maps used to characterize the LWRB and the Manitoba portion/entire WRB.



Figure 1. Map of the Winnipeg River Basin (136,840 km²), highlighting the LWRB (4,650 km²) (outlined in red)



Source: Agriculture and Agri-Food Canada (AAFC), 2013.

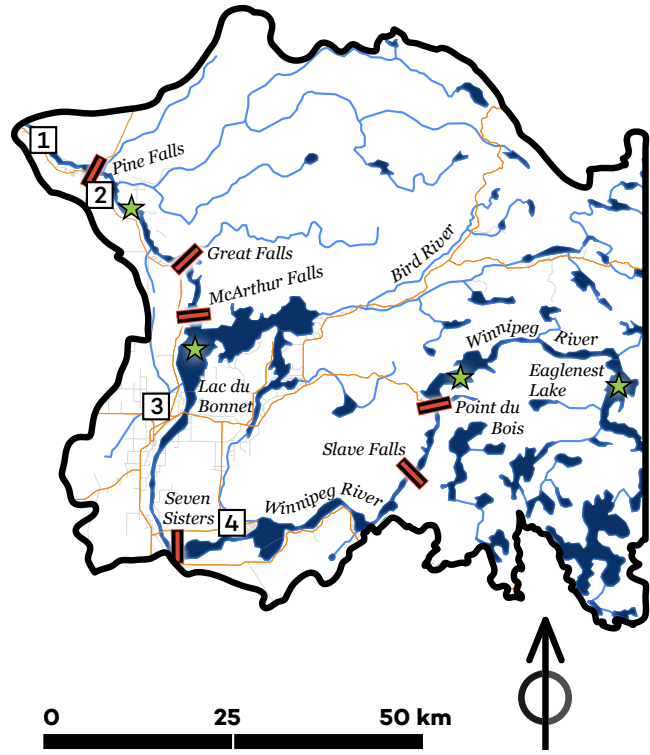


Figure 2. Map of the LWRB

Communities

- 1 Fort Alexander / Sagkeeng
- 2 Powerview-Pine Falls
- 3 Lac du Bonnet
- 4 Pinawa

- Generating Station
- River/Stream
- Trans-Canada Highway
- Highway
- Other Road
- Mainline Railroad
- Other Railroad
- Water Quality Sites



Source: Government of Manitoba, n.d.



Figure 3. Surficial geology and mine site map of the LWRB

Mines Status

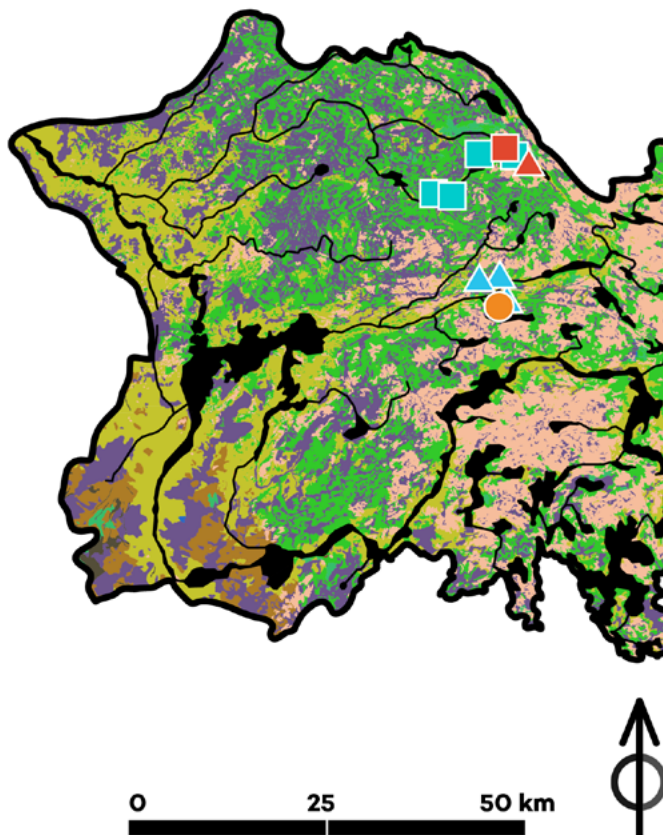
- Operational
- Non-operational
- △ Orphaned and Abandoned

Commodity

- Transition Metals
- Tantalum/Cesium
- Lithium

Surface Geology

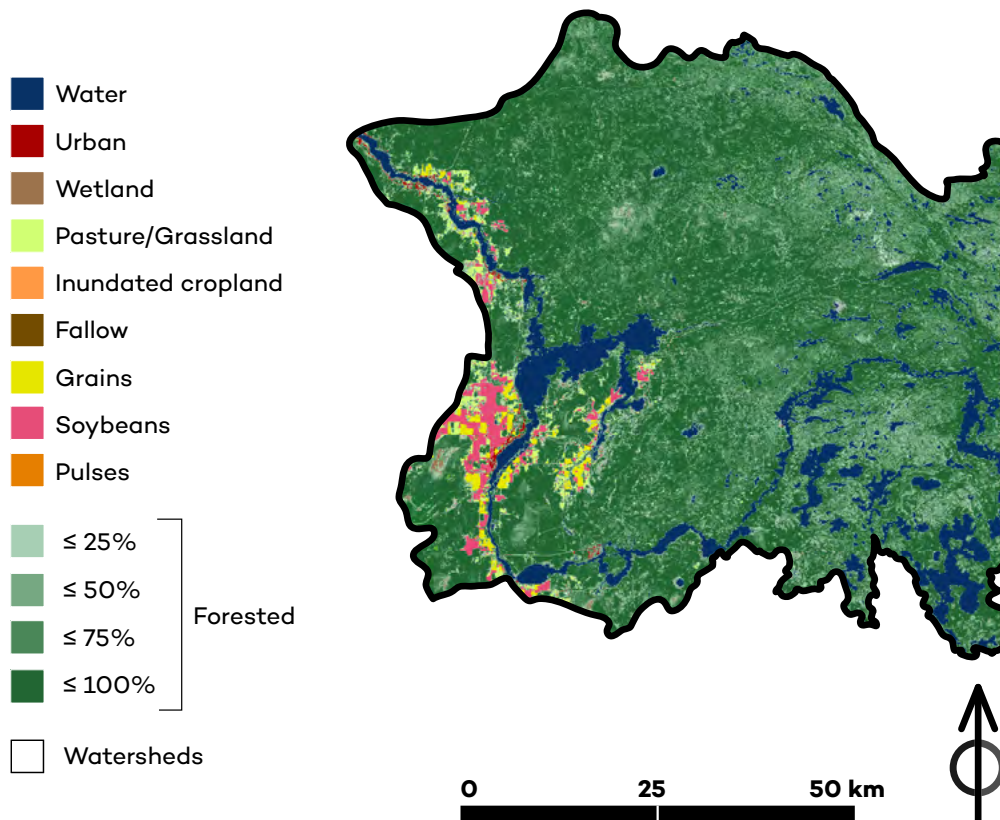
- Alluvial Sediments
- Distal Glaciofluvial Sediments
- Eolian
- Marginal Glaciolacustrine Sediments
- Offshore Glaciolacustrine Sediments
- Organic Deposits
- Paleozoic Terrane
- Precambrian Terrane
- Proximal Glaciofluvial Sediments
- Sand Diamicton
- Shoreline Sediments
- Silt Diamicton
- Surface Water



Source: Government of Manitoba, n.d.



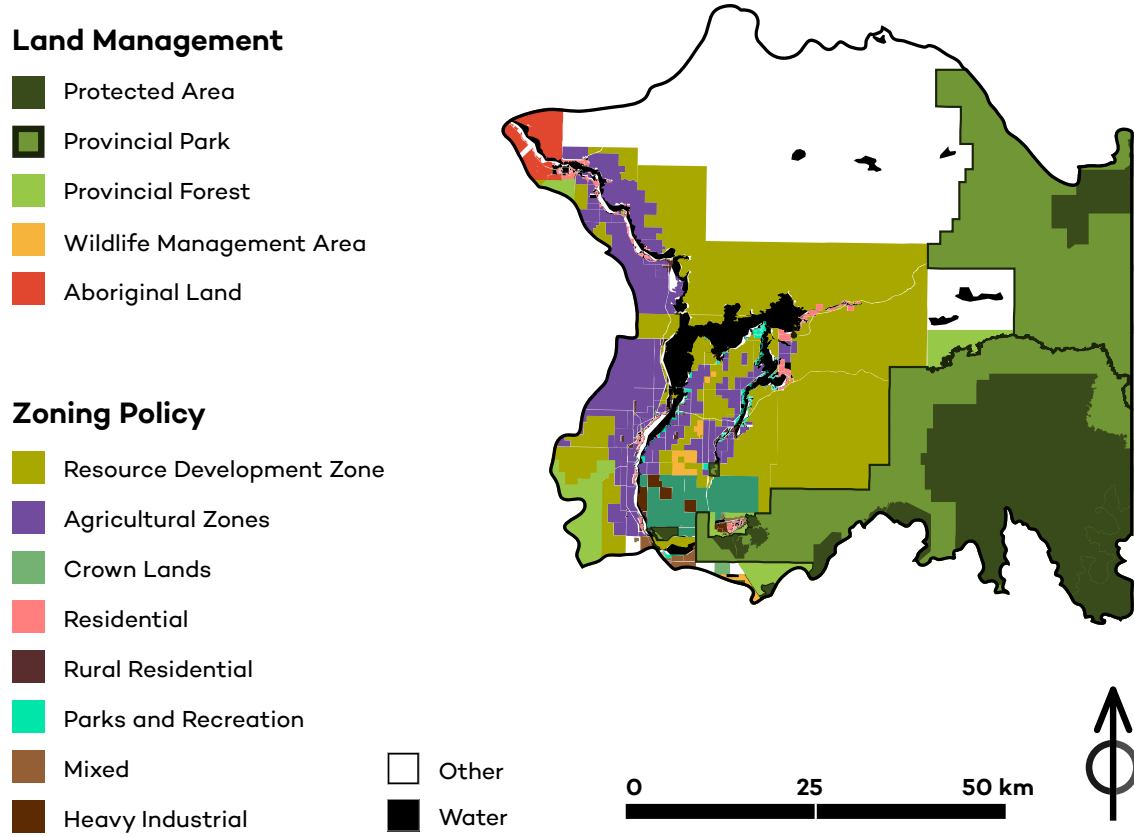
Figure 4. Land cover (2017) and forest cover (2000) map of the LWRB



Source: AAFC, 2017; Government of Manitoba, n.d.; Hansen et al., 2013.

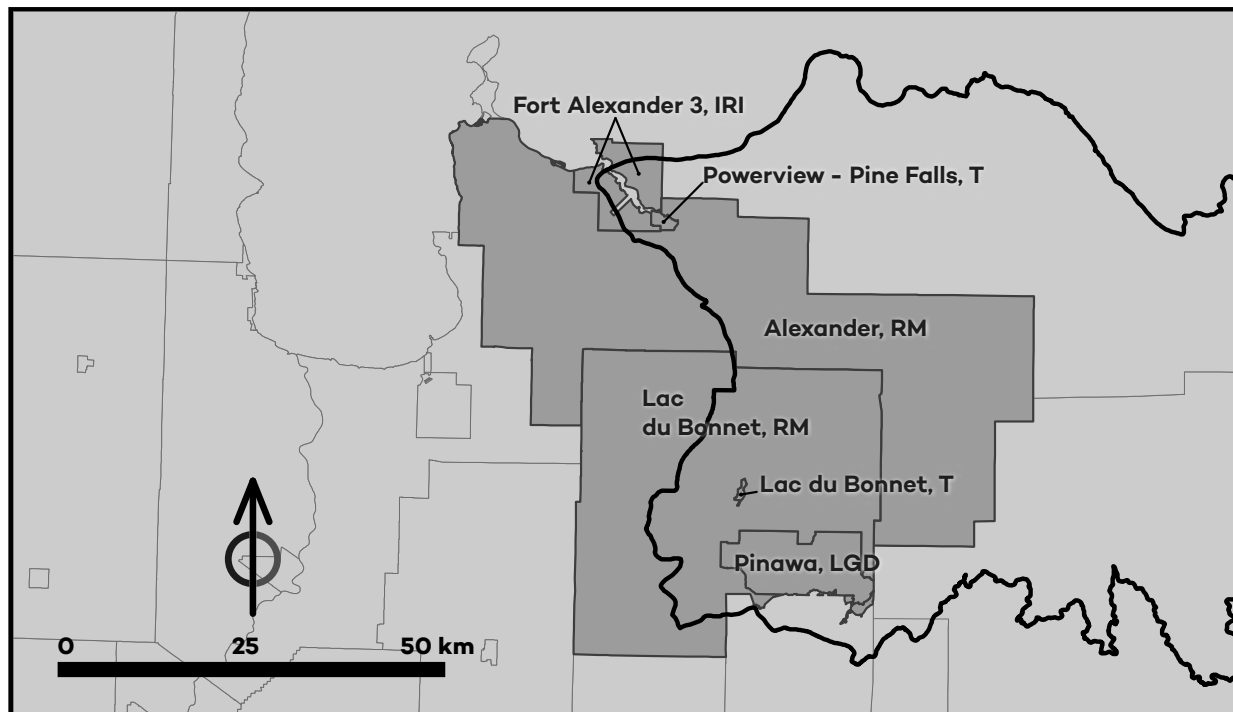


Figure 5. Land management and zoning policy map of the LWRB



Source: Government of Manitoba, n.d.

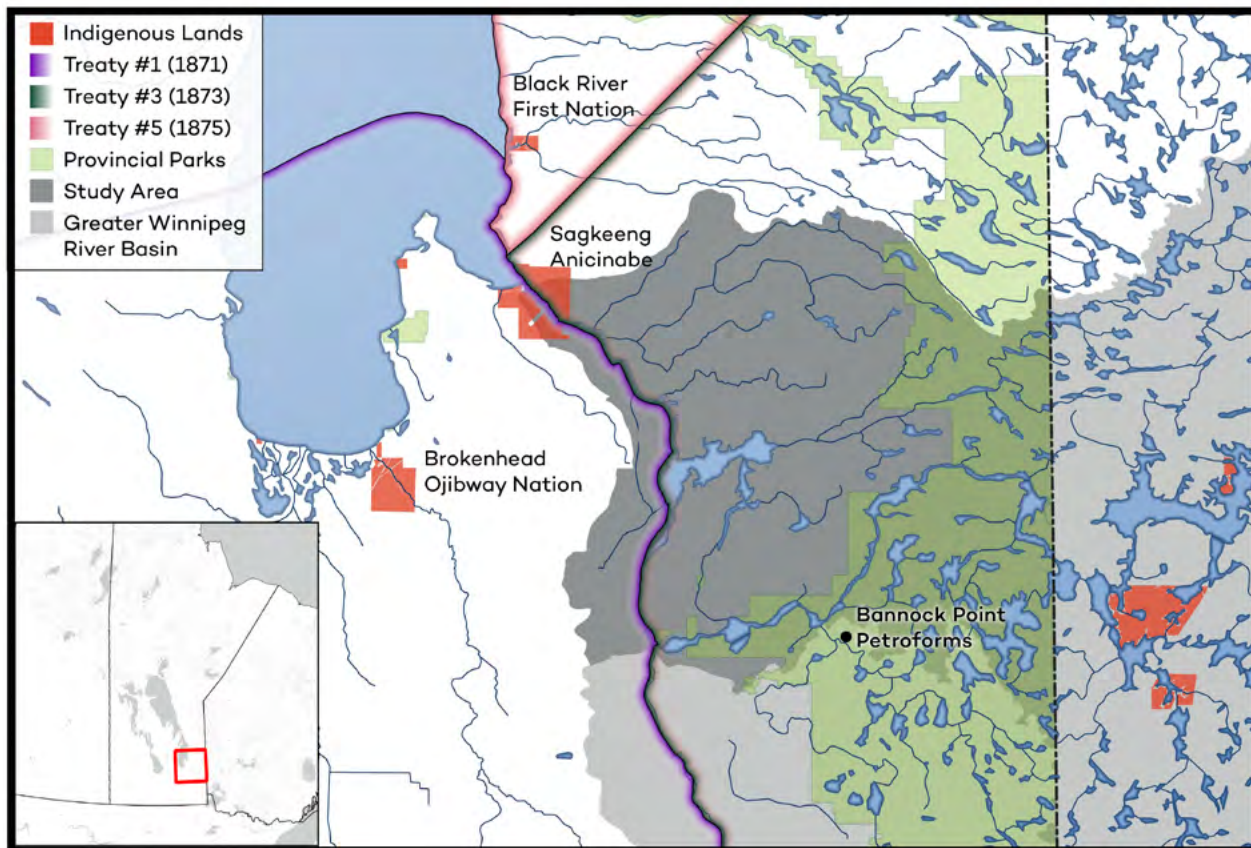
Figure 6. Census 2016 subdivisions partially and fully situated within the LWRB



Source: Statistics Canada, 2017a.



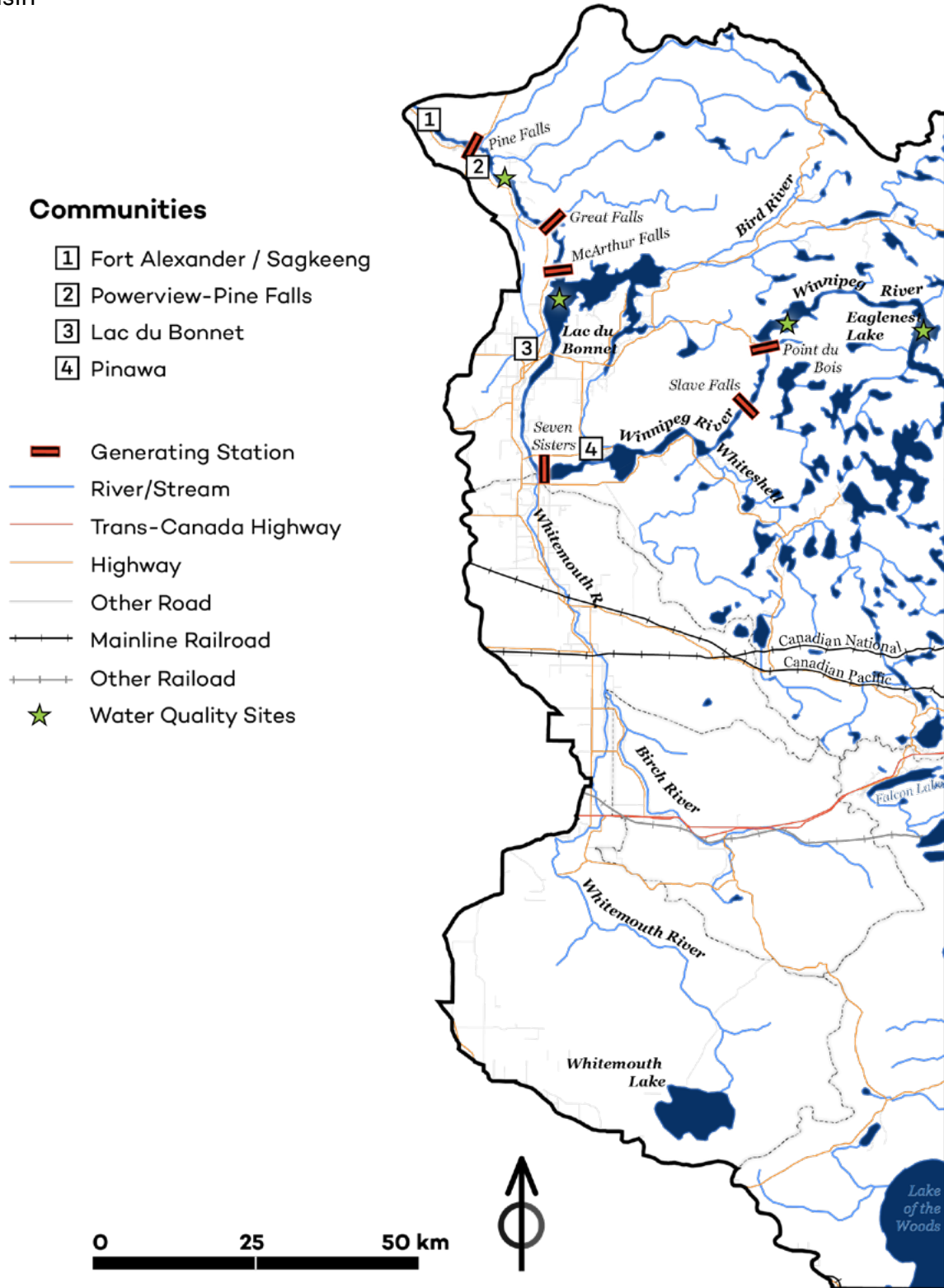
Figure 7. Map of Indigenous presence in LWRB



Source: Natural Resources Canada, n.d.



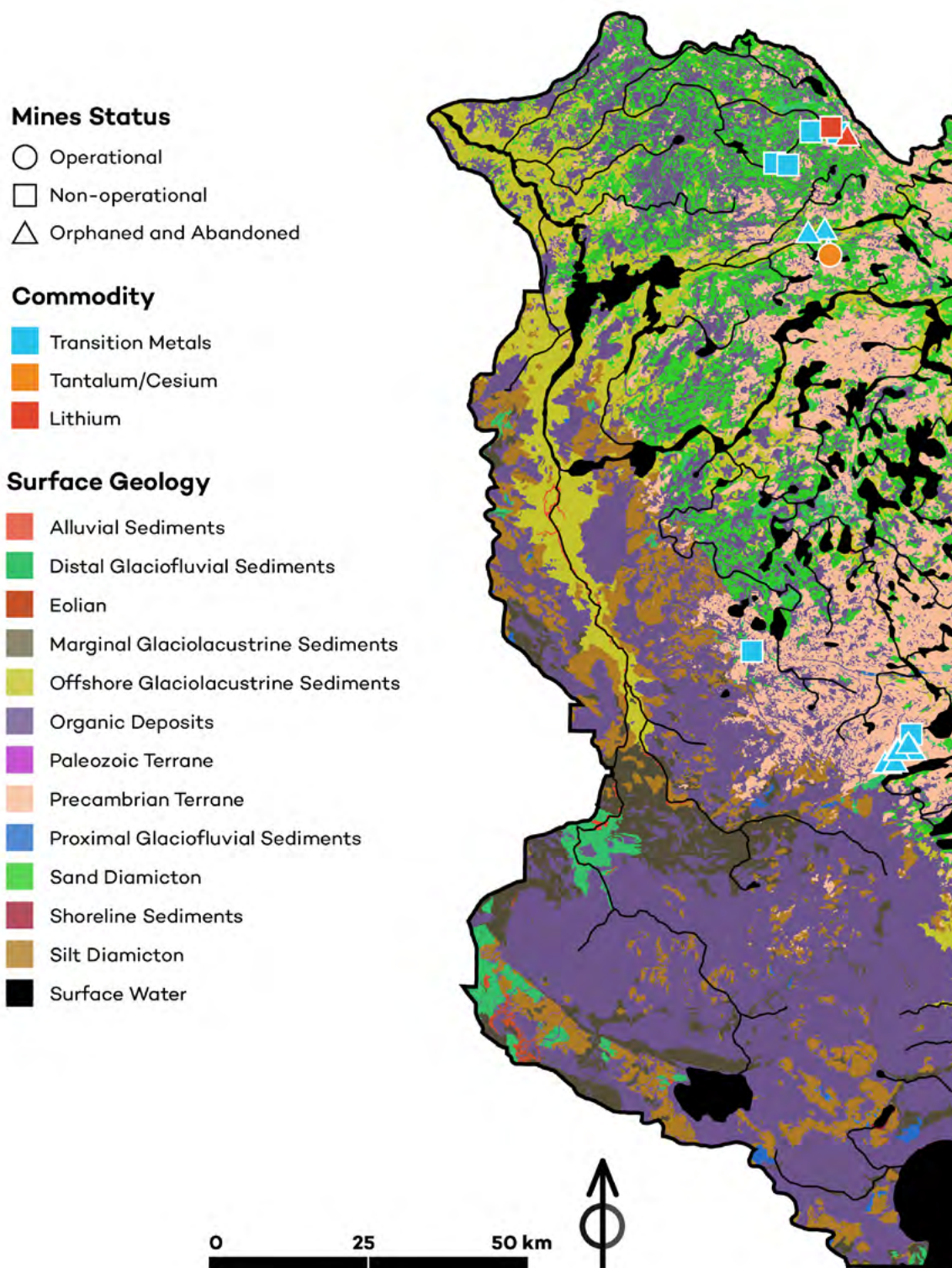
Figure 8. Context and community map of the Manitoba portion of the Winnipeg River basin



Source: Government of Manitoba, n.d.



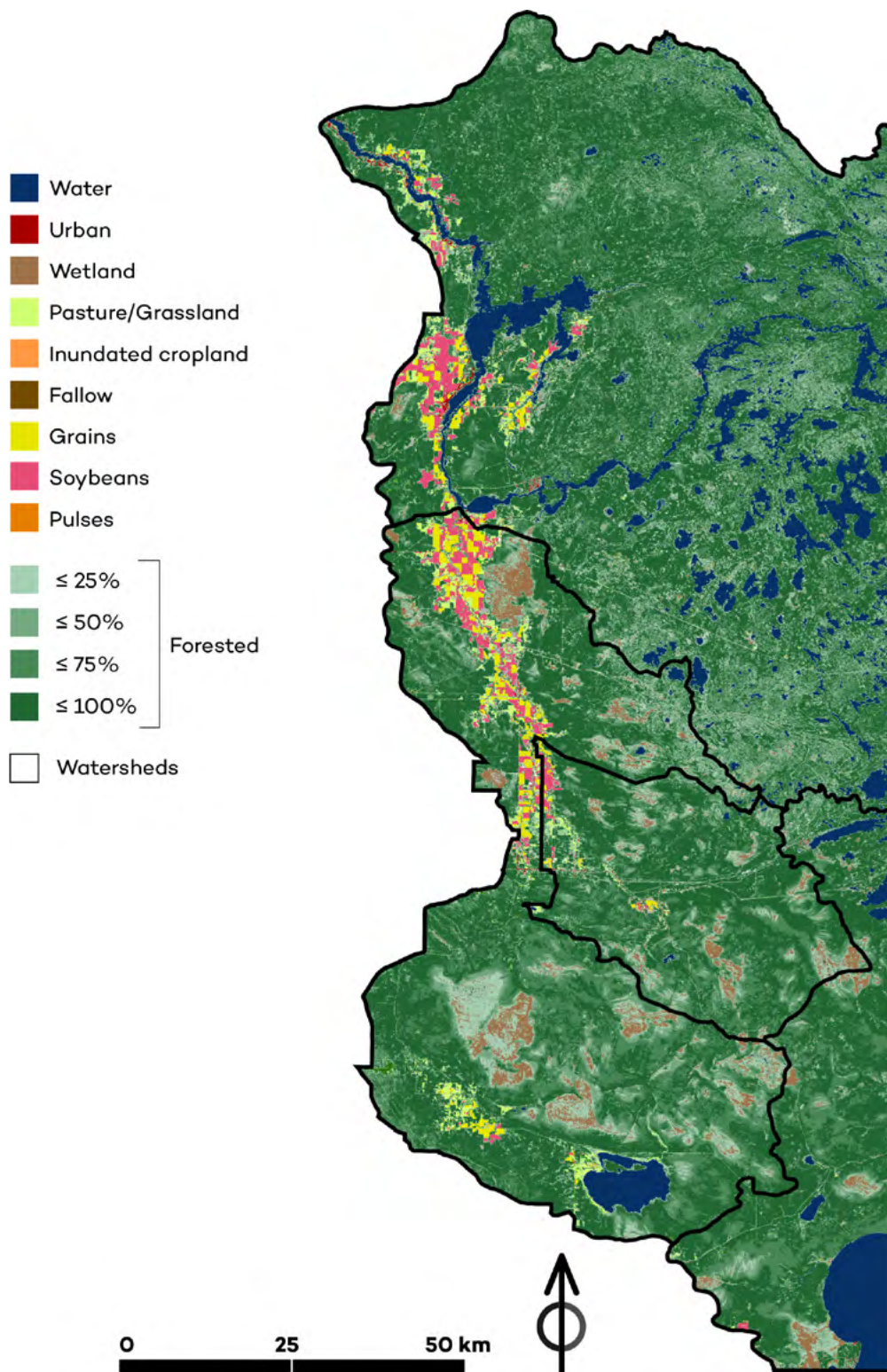
Figure 9. Surficial geology and mine site map of the Manitoba portion of the Winnipeg River basin



Source: Government of Manitoba, n.d.



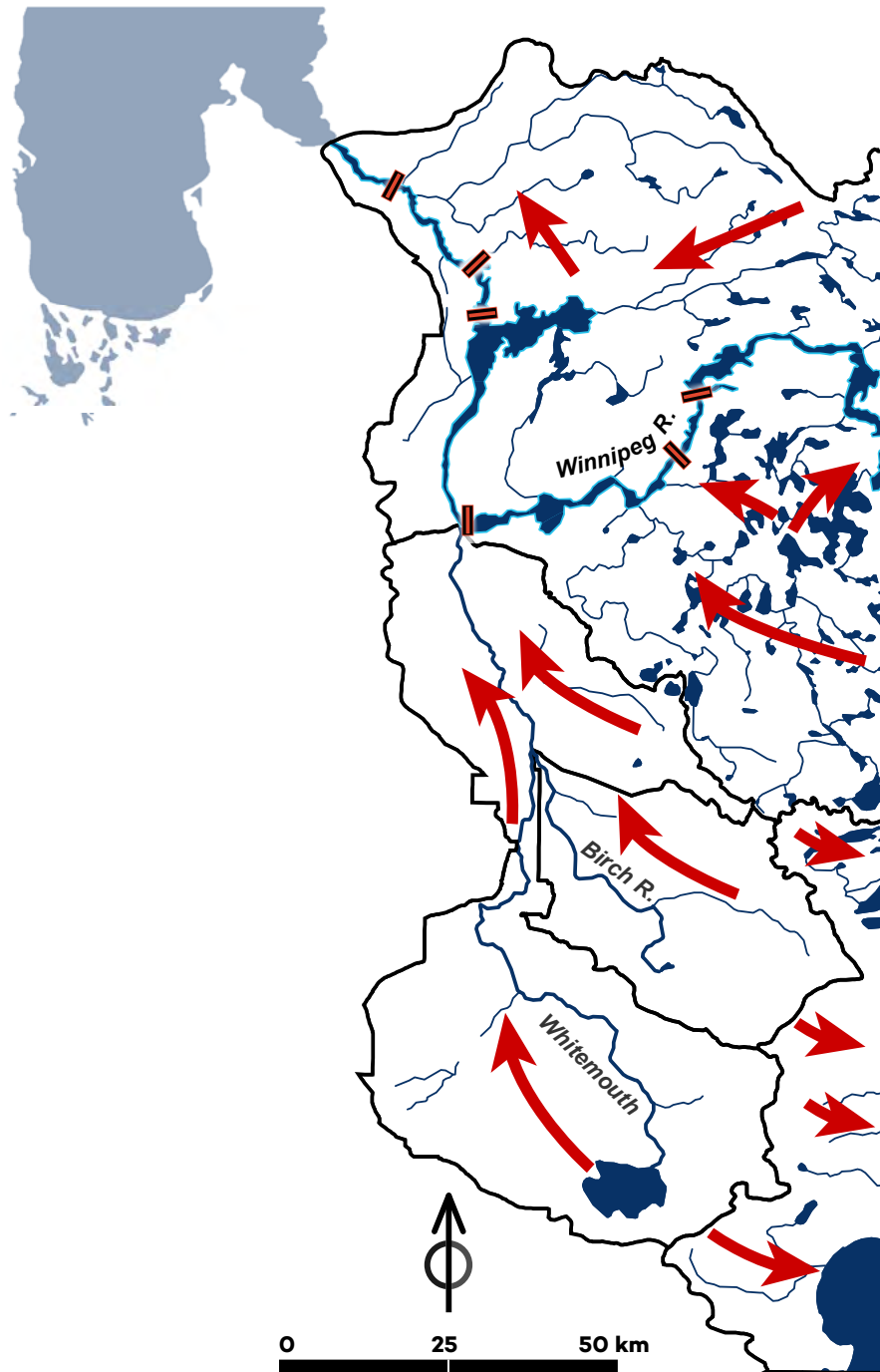
Figure 10. Land cover (2017) and forest cover (2000) map of the Manitoba portion of the Winnipeg River basin



Source: AAFC, 2017; Government of Manitoba, n.d.; Hansen et al., 2013.



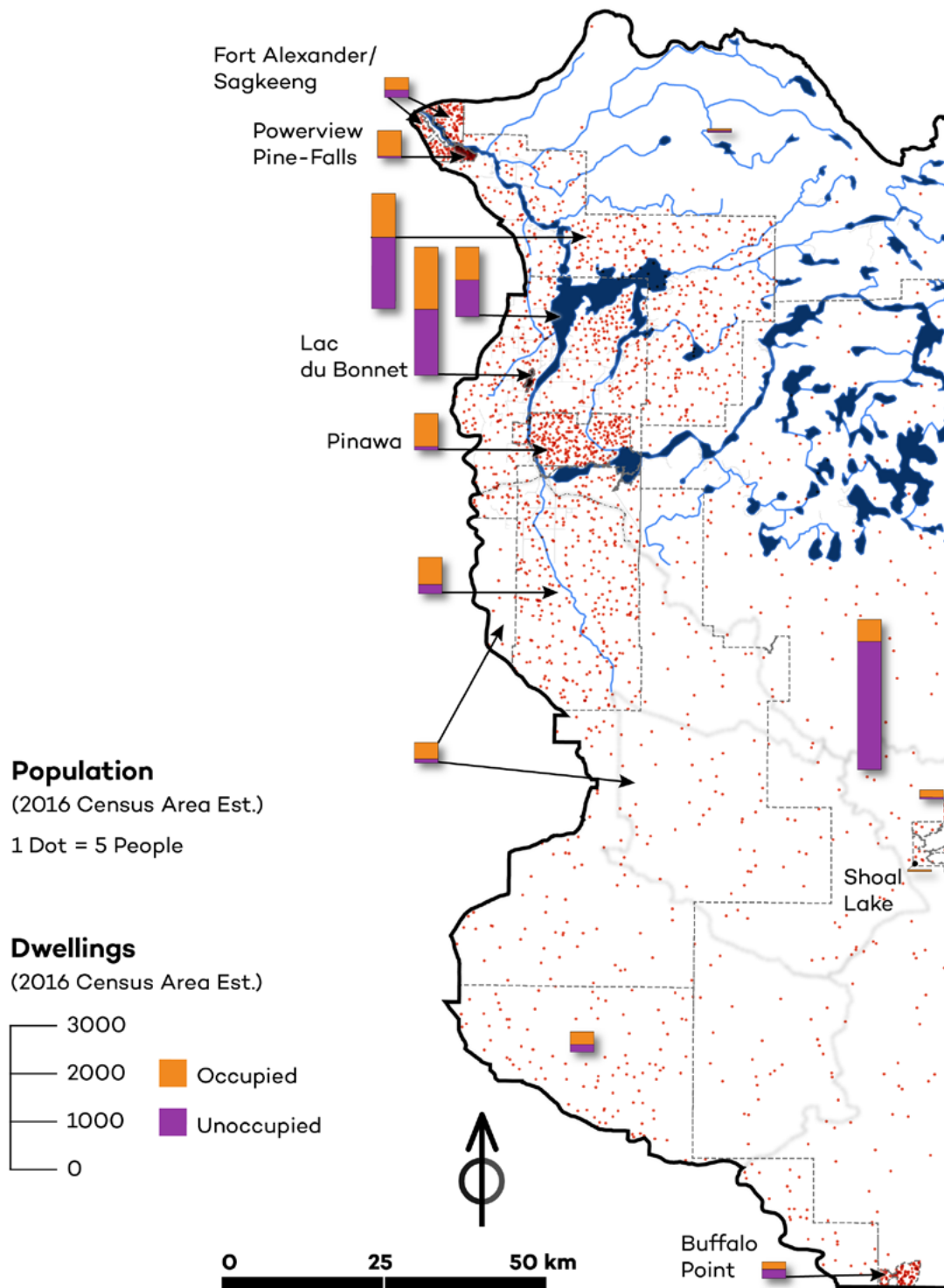
Figure 11. Surficial hydrology map of the Manitoba portion of the Winnipeg River basin



Source: AAFC, 2013; Government of Manitoba, n.d.



Figure 12. Population density and dwellings by subdivision map of the Manitoba portion of the Winnipeg River basin in 2016¹

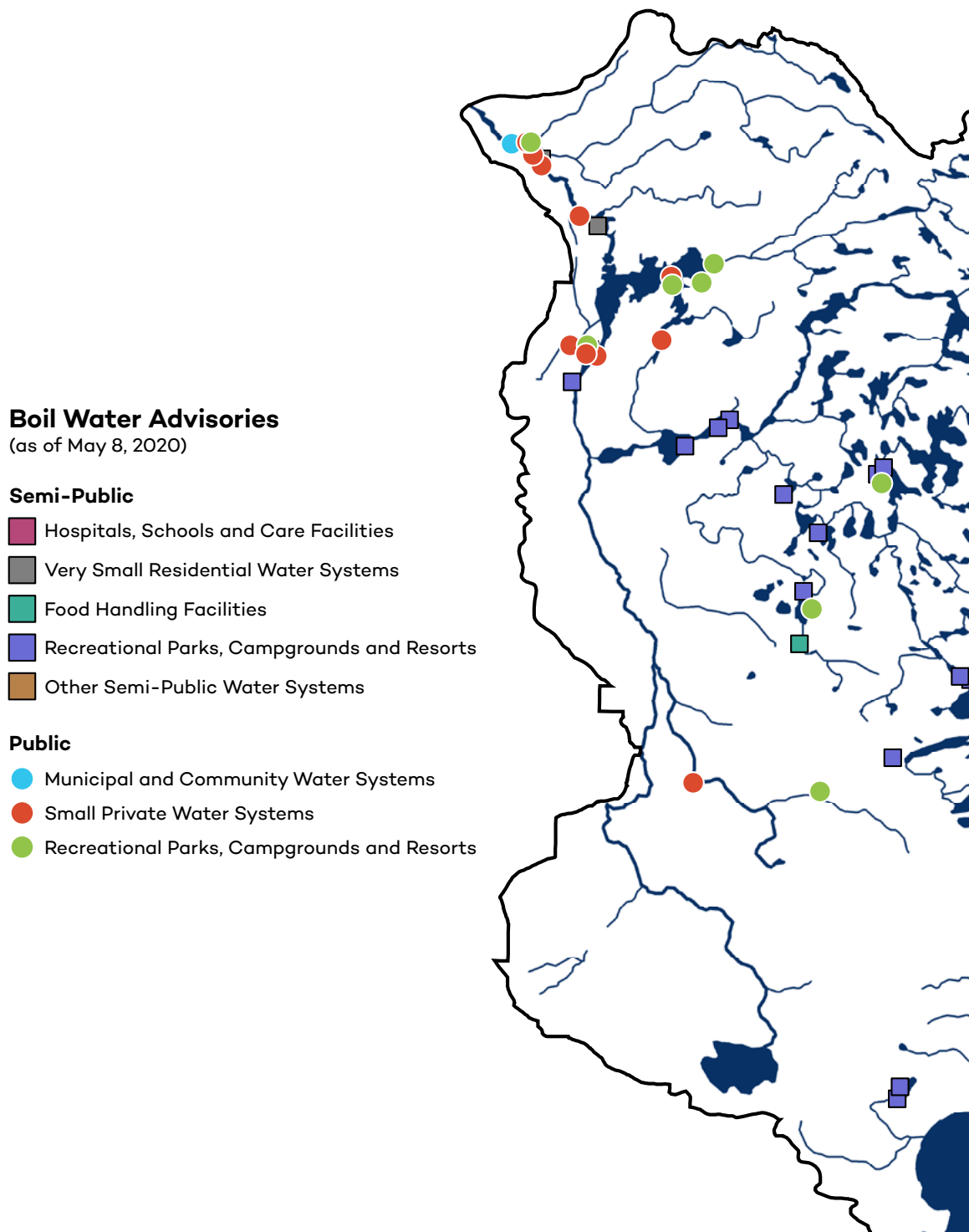


Source: Statistics Canada, 2017b; Government of Manitoba, n.d.

¹ The population and dwellings information is scaled to the watershed boundary.



Figure 13. Drinking Water Advisories map of the Manitoba portion of the Winnipeg River basin (including boil water advisories, do not consume advisories, and do not use advisories as of November 2018).



Source: Government of Manitoba, n.d.; Manitoba Sustainable Development, n.d.



References

- Agriculture and Agri-Food Canada (AAFC). (2013). *Gross and effective drainage area boundaries of the AAFC Watersheds project – 2013*. <https://open.canada.ca/data/en/dataset/063ee9b6-b3f2-45ab-9bed-d330880064d5>
- Agriculture and Agri-Food Canada (AAFC). (2017). *Annual crop inventory*. <https://open.canada.ca/data/en/dataset/ba2645d5-4458-414d-b196-6303ac06c1c9>
- Government of Manitoba. (n.d.). *Manitoba Land Initiative*. <http://mli2.gov.mb.ca/>
- Hansen, M. C., Potapov, P. V., Moore, R., Hancher, M., Turubanova, S. A., Tyukavina, A., Thau, D., Stehman, S. V., Goetz, S. J., Loveland, T. R., Kommareddy, A., Egorov, A., Chini, L., Justice, C. O. & Townshend, J. R. G. (2013). High-resolution global maps of the 21st-century forest cover change. *Science*, 342 (6160), 850–854. <https://doi.org/10.1126/science.1244693>
- Manitoba Sustainable Development. (n.d.). *Drinking water advisories in Manitoba*. https://www.gov.mb.ca/sd/waterstewardship/odw/public-info/boil-water/water_advisories_in_mb.html
- Natural Resources Canada. (n.d.) *Aboriginal Lands of Canada Legislative Boundaries*. <https://open.canada.ca/data/en/dataset/522b07b9-78e2-4819-b736-ad9208eb1067>
- Statistics Canada. (2017a) *2016 Census – Boundary files*. <https://www12.statcan.gc.ca/census-recensement/2011/geo/bound-limit/bound-limit-2016-eng.cfm>
- Statistics Canada. (2017b). *Dwellings occupied by usual residents and population in dwellings (6) of Canada, provinces and territories, census metropolitan areas and census agglomerations, 2016 Census – 100% Data* [Data table 98-400-X2016012]. <https://www150.statcan.gc.ca/n1/en/catalogue/98-400-X2016012>

© 2021 The International Institute for Sustainable Development
Published by the International Institute for Sustainable Development.

This publication is licensed under a [Creative Commons Attribution-NonCommercial-ShareAlike 4.0 International License](https://creativecommons.org/licenses/by-nc-sa/4.0/).

INTERNATIONAL INSTITUTE FOR SUSTAINABLE DEVELOPMENT

The International Institute for Sustainable Development (IISD) is an award-winning independent think tank working to accelerate solutions for a stable climate, sustainable resource management, and fair economies. Our work inspires better decisions and sparks meaningful action to help people and the planet thrive. We shine a light on what can be achieved when governments, businesses, non-profits, and communities come together. IISD's staff of more than 120 people, plus over 150 associates and consultants, come from across the globe and from many disciplines. Our work affects lives in nearly 100 countries.

IISD is a registered charitable organization in Canada and has 501(c)(3) status in the United States. IISD receives core operating support from the Province of Manitoba and project funding from governments inside and outside Canada, United Nations agencies, foundations, the private sector, and individuals.

Head Office

111 Lombard Avenue, Suite 325
Winnipeg, Manitoba
Canada R3B 0T4

Tel: +1 (204) 958-7700

Website: www.iisd.org

Twitter: [@IISD_news](https://twitter.com/IISD_news)



iisd.org